



Let LICHTEFELD handle the business of building while YOU handle building your business!



## AFS NEWCO

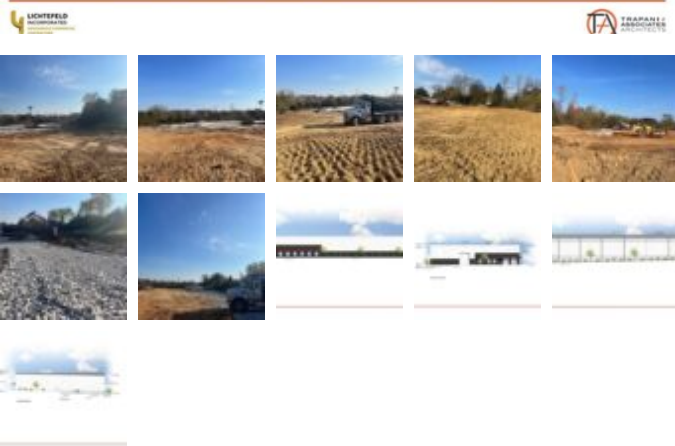
### Under Construction

Square Feet : 25,200 s.f.

Project Location : 13105 Middletown Industrial Blvd.  
Louisville, KY 40223

Construction Dates : October 2024 thru April 2025

End User : Groundworks, LLC.



25,200 s.f. building with 4,800 s.f. office space on 4-acres. The project will have a Butler MR-24 standing machine seamed roof system, masonry walls with Butler flat Stylewall panels above Shadowwall panels with translucent light panels on the rear.

Designed by Lichtefeld, Inc. partnered with Trapani Architects

