



BANNON WOODS EQUINE

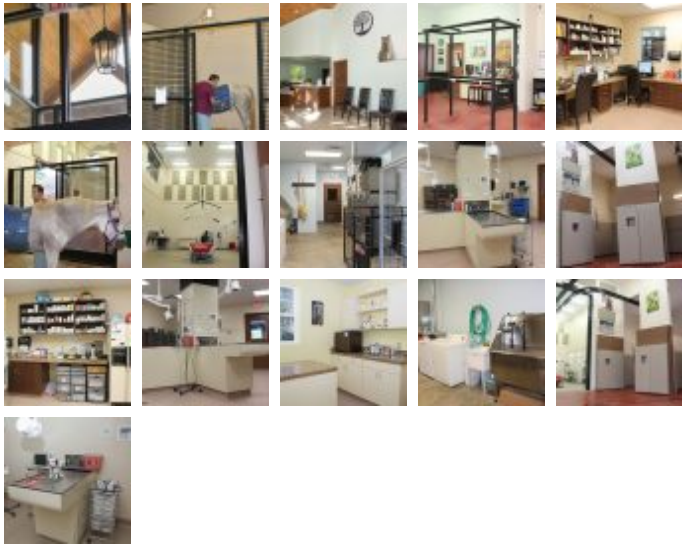
Medical Projects

Square Feet : 7,572 s.f.

Project Location : 1000 Dezern Court, Louisville KY

Construction Dates : August, 2015 thru Feb 2016

End User : Medical Vet



This project is a 7,572 square foot Veterinary Equine Office/Hospital project. It has a block foundation, concrete floors, wood framed structure, wood truss roof system, painted block, brick/stone facade, vinyl siding, double hung windows, shutters, shingled roof, specialty stalls inside, two cranes for equine surgery, small pets veterinary area, second floor offices and observation room.

This project was designed and built by Lichtefeld, Inc. Phase 2 will be partnered with AI Architects.

