



ECLIPSE BANK

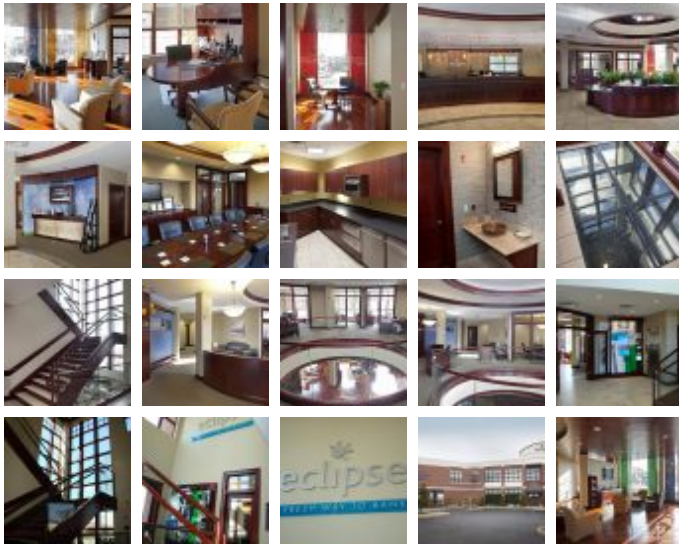
Office Buildings

Square Feet : 11,000 s.f.

Project Location : *Shelbyville Road - Louisville, Kentucky*

Construction Dates : *Start: January 2007 - Complete: February 2008*

End User : *Banking*



11,000 s.f. two story bank office building. Construction type: Conventional custom structural steel package, metal stud facade, brick veneer, store front glass, ceramic tiles, hardwood floors, ornate wood workings, crown molding, chair rail, dental molds, ornate glass railings in stair wells, interior fish pond, state of the art electronic media displays . Design build by Lichte Feld, Inc. partnered with Berry-Prindle Architects.

