



Let LICHTEFELD handle the business of building while YOU handle building your business!



INTERSTATE UTILITY TRAILER

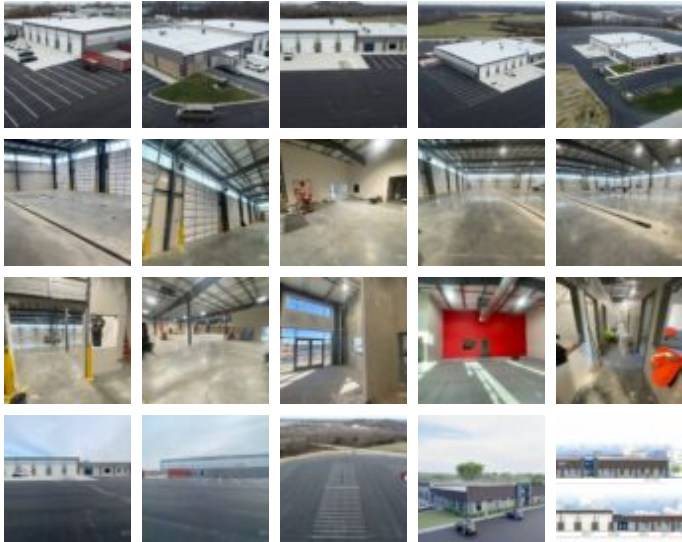
Office / Warehouse, Trucking Facilities

Square Feet : 33,000 s.f.

Project Location : 5263 Progress Way
Sellersburg, IN

Construction Dates : May 2024 through December 2024

End User : Office/tractor/trailer repair service



The project is a 33,000 s.f. office/repair shop. There is 5,180 s.f. of office space, 1,705 s.f. showroom, 7,195 s.f. parts room, and 18,920 s.f. of garage repair. There are 12 bays for trailer repair.

This project is a 33,000 s.f. Butler custom metal building, 10' tall masonry Wainscot (MaxBric), metal wall panels, storefront glass, wall lite panels, concrete slabs, metal canopies, 12 overhead drive in doors, metal pedestrian doors, concrete truck aprons, and Butler state of the art MR-24 standing machine seamed roof system with 25-year warranty.

The site is 8 acres developed and has room for 200 trailers all stored on an asphalt parking lot.

This building project was designed and built by Lichte Feld, Inc. partnered with Trapani Architects and Butler Manufacturing.



