



Let Lichtefeld handle the "BUSINESS OF BUILDING" while you handle BUILDING YOUR BUSINESS!



LACROIX DEVELOPMENT

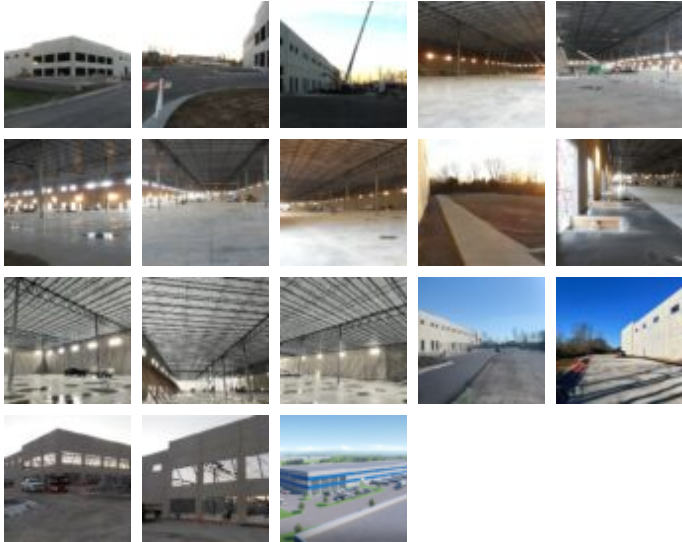
Under Construction

Square Feet : 160,000 s.f.

Project Location : *Midland Industrial Drive
Shelbyville, KY 40065*

Construction Dates : *April 15, 2023 to December 15, 2023*

End User : *Warehouse/Distribution Facility*



160,000 s.f. distribution building with 16 loading docks and concrete aprons. Conventional steel structure with TPO roof. 10 acres of earthwork including retention basin and 116 parking spaces.

Design and built by Lichtefeld, Inc. partnered with J. Lake Architecture and Design.

