



MASON LANE FARM

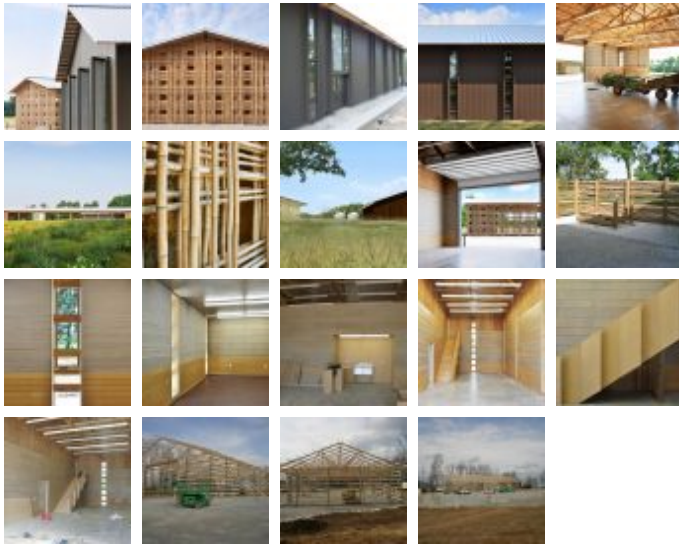
Storage Buildings

Square Feet : 16,000 s.f. (LEED Project)

Project Location : 1629 S. Highway 1694 - Goshen, Kentucky

Construction Dates : October 2008

End User : Agricultural



This is a LEED project (Leadership in Energy and Environmental Design). Two buildings, 16,000 s.f. barn storage/shop/office area, pole barn structure with stylewall siding and VSR roof systems, Interior is very basic - OSB walls with Homasote board and particle planks. Bathroom and office have MCT tile and ceramic. Concrete will include 50% recycled materials. Open storage building will include a pole barn/truss structure with VSR roofing and bamboo lattice on the endwalls. The project is designed by DeLeon and Primmer Architects and built by Lichtefeld, Inc.

