



Let Lichteinfeld handle the BUSINESS OF BUILDING while you handle BUILDING YOUR BUSINESS!



NORTON PRIMARY CARE & NEURO

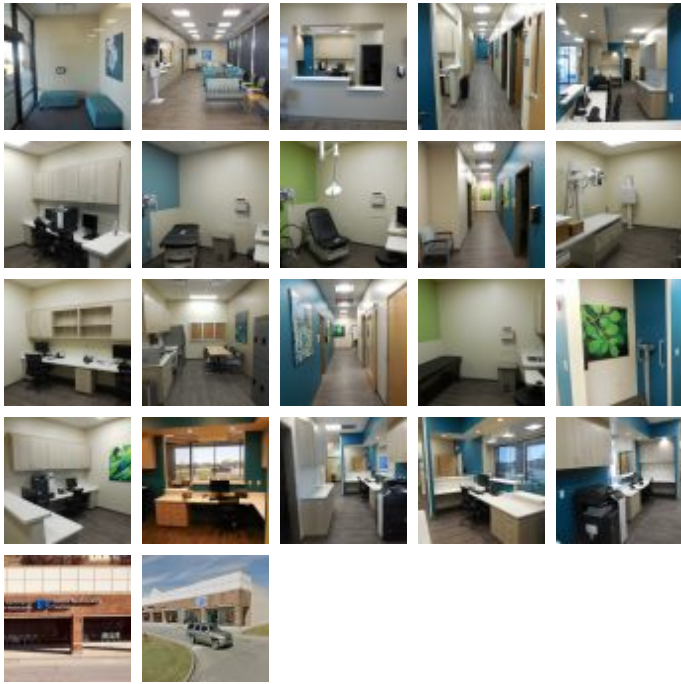
Medical Projects

Square Feet : 4,875 s.f.

Project Location : 106 West John Rowan Blvd.
Bardstown KY

Construction Dates : 4 month project

End User : Medical



This 4,875 s.f. space is located in an existing strip center in Bardstown, Ky. Lichteinfeld, Inc. has been awarded the interior demolition and remodel of the existing tenant space. The work consists of concrete slab demolition, removal, and replacement of under slab plumbing lines. There are masonry openings to be demolished and expanded, new doors to put in, stud and drywall work, interior painting, new flooring, new base, new millwork/case work, reworked lights and receptacle devices, sprinkler remodel etc.

