



Let LichteFeld handle the business of building while You handle building your business!



# OAKLAND EASTPOINT PROPERTIES

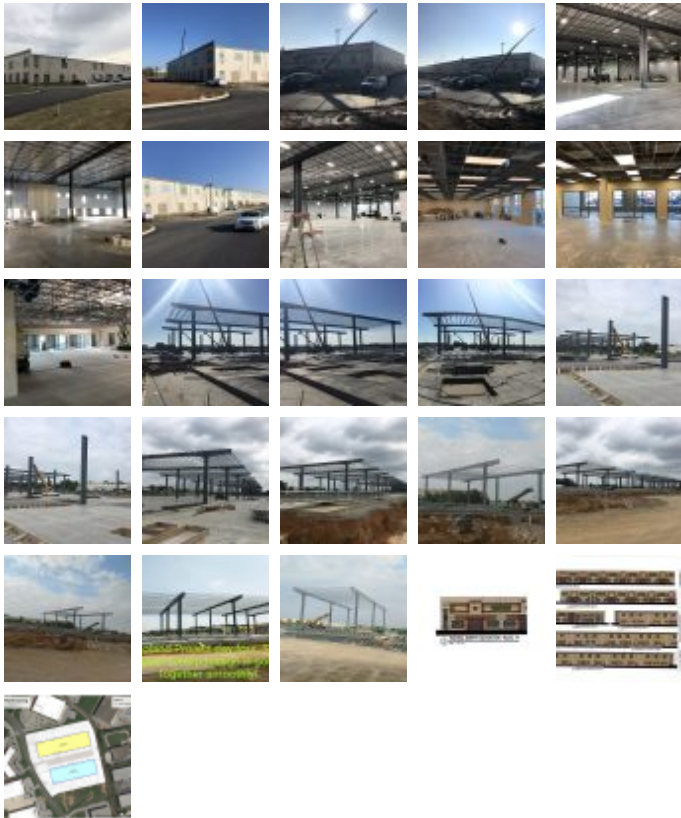
## Office / Warehouse

Square Feet : 174,500 s.f. (28' low eave height)

Project Location : 2501 Stanley Gault Parkway, Eastpoint Business Park, Louisville, Ky

Construction Dates : 5-1-18 to 10-30-18 (Major rain delays)

End User : Office Warehouse /Distribution



LichteFeld, Inc. is providing the Butler Metal Building System for Oakland Eastpoint, LLC. managed by Boland Properties. LichteFeld, Inc. partnered with DKN Architects to provided the custom engineering system for the base structural steel package. This project is for 174,500 s.f. office warehouse/distribution center. The building has a Butler state of the art MR-24 standing machine seamed roof system with 25 year warranty. The building has 50' x 50' bays nominal, R-30 insulated roof system, supports 9.25" concrete tilt wall panels on all four sides. There will





be a 10,000 s.f. mezzanine system in the building for the tenants 2 story office space. This building is a speculative building with one tenant committed YTD.

This project was designed by Butler Engineering Systems along with DKN Architects and SCA Engineers.