



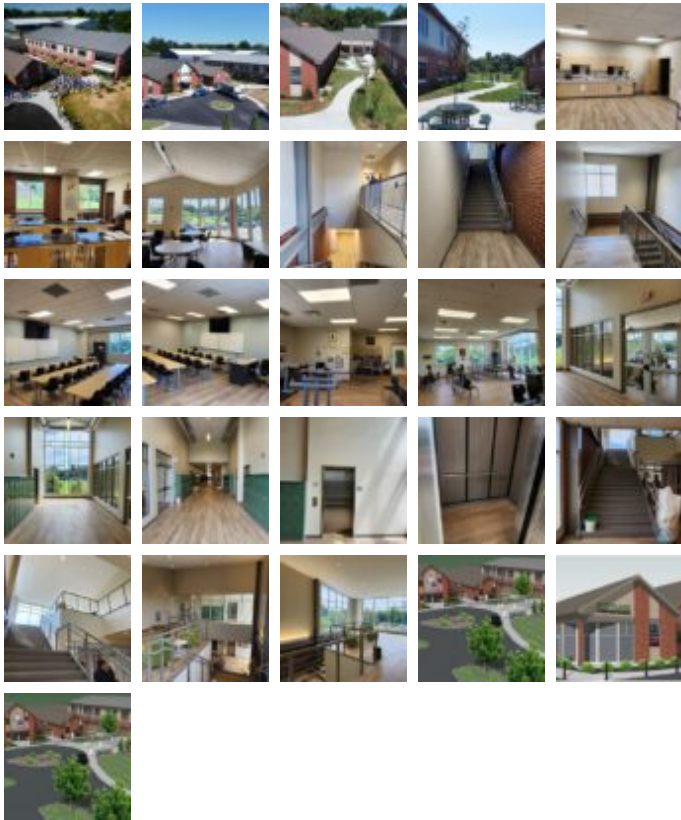
PORTLAND CHRISTIAN HIGH SCHOOL - NEW MUNICIPAL CONSTRUCTION PROJECT

Schools and Churches

Square Feet : 26,000 s.f. with 2,000 s.f. remote music room addition

Construction Dates : October 1, 2022 thru July 30, 2023 (10 months)

End User : Portland Christian School



Approximately 26,000 s.f., 2-story Butler Manufacturing™ custom-engineered superstructure, featuring a standing seam roof, Stylewall metal wall panels, Maxbric wainscot block walls, storefront glass, connector corridor to the existing building, and one 2,000 s.f. remote music room addition.

This project is designed and built by Lichtefeld, Inc. partnered with AI Engineering and Butler Manufacturing.

