



Let LICHTEFELD handle the business of building while YOU handle building YOUR business!



PORTLAND CHRISTIAN SCHOOL

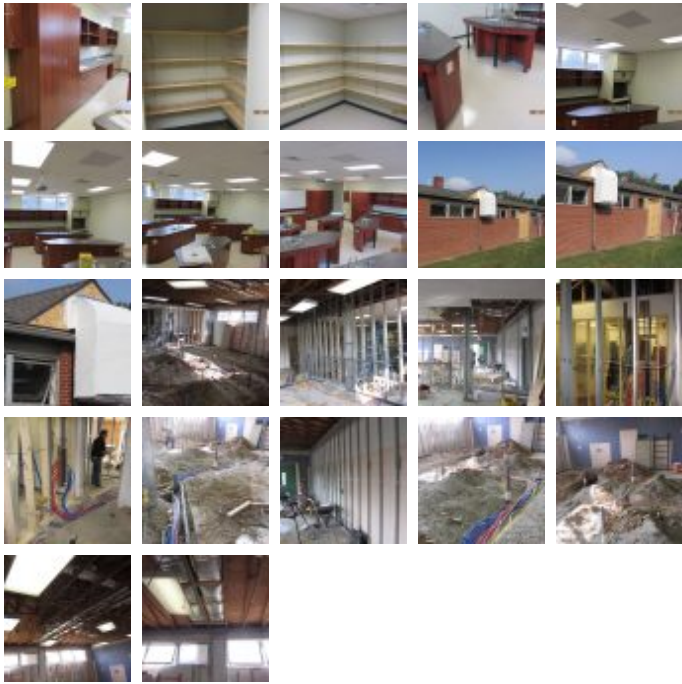
Schools and Churches

Square Feet : 2,400 s.f. remodel

Project Location : Westport Rd. - Louisville, Kentucky

Contruccion Dates : 7-11-12 to 8-30-12

End User : School Lab



Demolition and remodel install of a "chemistry lab" for the school. Dead line was three months in the summer. There was some remodeling of interior spaces while in school. This was a phased project with after hours work and in school organization. The project was well orchestrated and finished early.

Designed and built by Lichtefeld, Inc. partnered with Berry Prindle Architects.

