



SIMPSONVILLE FIRE DEPARTMENT, STATION #1

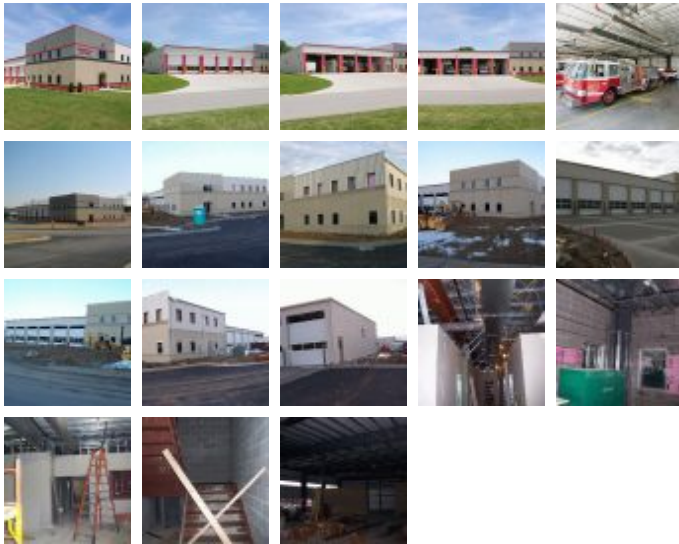
Public Services Buildings

Square Feet : 17,000 s.f.

Project Location : *Simpsonville, Kentucky*

Contruction Dates : *Start: September 6, 2005 - Completed: January 2006*

End User : *Simpsonville Fire Department*



17,000 s.f. total fire station, 9,000 s.f. garage with 8,000 s.f. office/miscellaneous use. The building will be a Butler Wide Span facility with a MR-24 roof system. It will have masonry, BR-II and texture wall panel system. Additional materials to be used are block and storefront glass. It will have a 2 stop elevator, truck water fill stations at every bay and a radiant heated garage. Designed by Lichtefeld, Inc and Berry Prindle Architects. Engineered by Butler Manufacturing and Milestone Engineering.

Hard-bid project by Lichtefeld, Inc.

