



THEATRE BUILDING

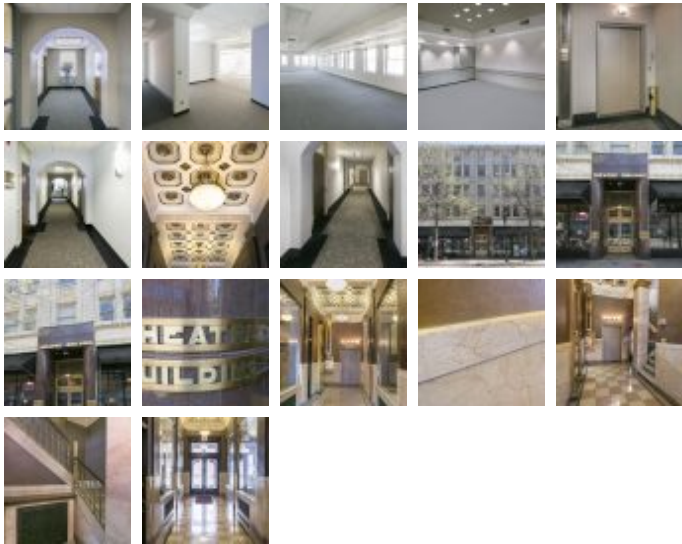
Office Buildings

Square Feet : 34,572 sf

Project Location : 629 4th Street Louisville, Ky

Construction Dates : Built in 1929 Renovated in 1984

End User : Office



Project was bought and redesigned/ fully renovated by Lichtefeld Inc. in 1984. This building is on the historical register and complies with the historical renovation processes as required by the commission.

Located in the heart of the revitalized sections of Fourth Street in Louisville’s central business district, the Theatre Building sits between Broadway and Chestnut Streets. The property offers easy access to the Interstate Highway system, restaurants, hotels, and shopping. The property sits between the medical, legal, entertainment and arts districts of the CBD. Ample parking opportunities for tenants and clients at numerous nearby garages and metered street parking spots.

The beautifully renovated art deco building provides modern amenities while maintaining the historic nature of the 1920’s building. The original facade of terra cotta and glazed-tile panels was left in tact. The building was designed by John Eberson, a famous architect who also designed the Loews/United Artists theater, now the Palace. The main entrance is finished in smooth red marble and recessed bronze-plated double doors. The lobby features





large chandeliers and a coffered ceiling that is adorned by rosettes.

- Building Type: Office
- Year Built: 1929 (Renovated 1984)
- Total Building Size: 34,572 RSF
- Total Available: 31,204 RSF
- Number of Floors: 4