



# TONY'S WRECKER SERVICE

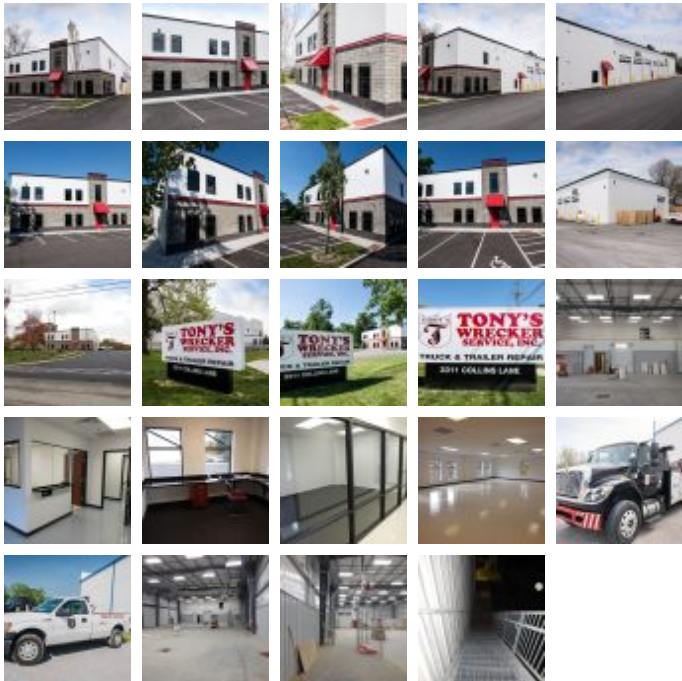
## Trucking Facilities

Square Feet : 14,160 s.f.

Project Location : 3311 Collins Lane, Louisville, KY

Construction Dates : 4-13-15 thru 11-13-15

End User : Trucking



The project is a 14,160 s.f. office and wrecker maintenance service garage project. Tony's Wrecker Service has over 70 years of towing and recovery engineering services and processes. Their expertise is handling all vehicles both large and small. The building will be used for truck repair and maintenance services for Tony's fleet. This building will be the new headquarters for Tony's Wrecker Service.

The building is designed using materials of masonry block, store front glass, concrete floors, Butler steel building infrastructure with MR-24 metal machine seamed galvanized roof systems. There will be offices, restrooms, breakrooms, conference rooms, as well as truck maintenance bays for operations.

This project is designed and built by Lichte Feld, Inc. coupled with Berry Prindle Architects.



