



Let Lichtefeld handle the business of building while YOU handle building YOUR business!



WALSH O AND M EAST END BRIDGES

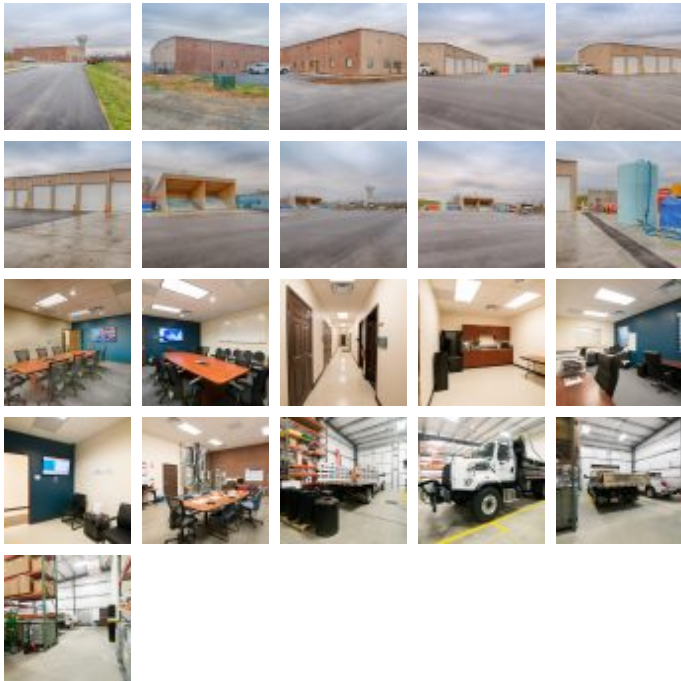
Public Services Buildings

Square Feet : 6,500 s.f. office maintenance garage with 2,500 s.f. brine storage shelter.

Project Location : 1700 Old Salem Road, Jeffersonville, IN 47130

Construction Dates : 1-5-2016 thru 6-1-2016

End User : Bridge Maintenance facility



6,500 s.f. office and garage facility for the bridge maintenance contract. Also a 2,500 s.f. brine area and covered salt storage building. All site work is by Walsh Vinci Construction. This project is a Butler manufactured steel structure building with screw down roof system. The walls are a combination of insulated 26 gage BR11 metal panel and insulated wall panels. The front wall systems are made of Max Brick masonry laid in running bond fashion made to look like brick. The project was designed and built by Lichtefeld, Inc., Butler Mfg., partnered with QK-4 civil engineers and Berry Prindle Architects.

This is a maintenance facility for the East End Bridge.



